

MIKE MCGILL,  
SPECIAL DISTRICT  
COMMISSIONER  
CONTRA COSTA  
LAFCO

CONTRA COSTA LOCAL AGENCY FORMATION COMMISSION



# MSR CASE STUDIES AND LESSONS LEARNED FROM A COMMISSIONER'S PERSPECTIVE

# OVERVIEW OF CITIES & DISTRICTS IN CONTRA COSTA COUNTY

- 19 cities and 77 special districts (independent and dependent)
- Population of 1,139,513 (CA Dept. of Finance 2017)
- 804 square miles
- Since 2000 re-write of LAFCo law we have completed one consolidation and six dissolutions
- The MSR process in some instances has uncovered a special district we didn't know existed

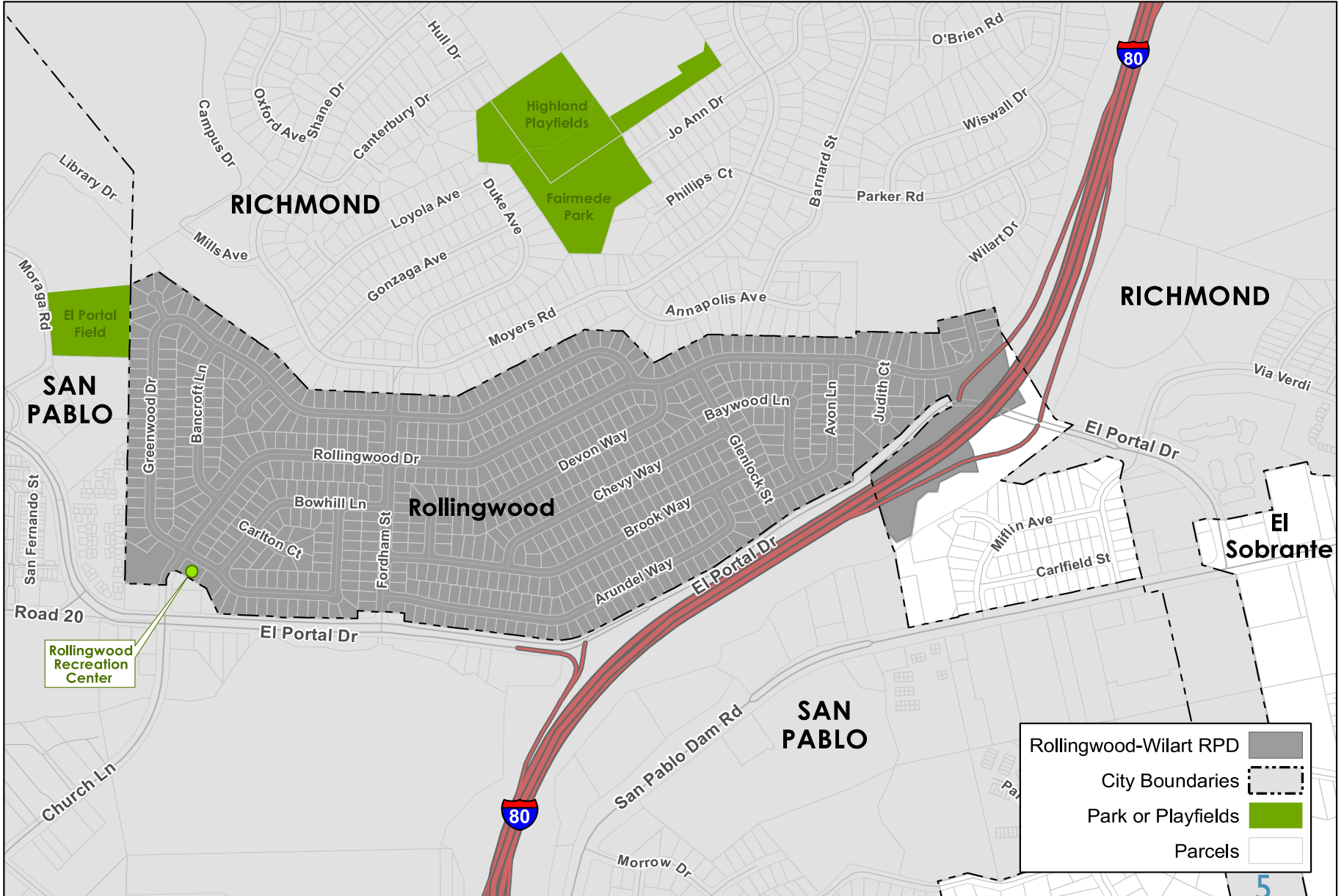
# ROLLINGWOOD-WILART PARK RECREATION & RECREATION DISTRICT (RWPRPD)

- Independent district of 2,800 residents formed in 1956 to operate and maintain the Rollingwood Recreation Center
- Events included community group fund raisers, church activities, life celebrations, square dancing, support groups
- Charges fees for facility use, although local groups often allowed free or below-cost use
- District receives property taxes (about a 2% share of property tax, or \$28,000/yr)

# BRIEF HISTORY – AN ITERATIVE PROCESS

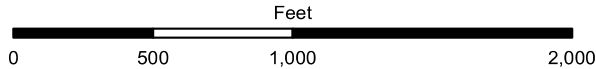
- 2010 LAFCO MSR and 2012 Grand Jury report found the District failed to perform basic management practices
- District did not implement recommendations, had reduced facility usage, pending retirement of key board members, and lack of community interest which led District to shut down operations
- 2016 LAFCo commissioned Special Study to evaluate governance options
- 2018 LAFCo initiated and completed dissolution with County as successor agency
- County is working with City of San Pablo on use/sale/ transfer of community center

# Rollingwood-Wilart Recreation and Park District



Map created 12/01/2016  
 by Contra Costa County Department of  
 Conservation and Development, GIS Group  
 30 Muir Road, Martinez, CA 94553  
 37:59:41,791N 122:07:03,756W

This map or dataset was created by the Contra Costa County Department of Conservation and Development with data from the Contra Costa County GIS Program. Some base data, primarily City Limits, is derived from the CA State Board of Equalization's tax rate areas. While obligated to use this data the County assumes no responsibility for its accuracy. This map contains copyrighted information and may not be altered. It may be reproduced in its current state if the source is cited. Users of this map agree to read and accept the County of Contra Costa disclaimer of liability for geographic information.



# RWPRPD COMMUNITY CENTER



# RWPRPD COMMUNITY CENTER



# GOVERNANCE OPTIONS - STATUS QUO

- The Status Quo was not considered a viable option
- Vacancy on board
- Building in fair condition, meets fire safety codes
- Insurance maintained on building; utilities and other bills are current
- District was booking limited events through 1<sup>st</sup> quarter 2017 and began terminating services and building activities
- About \$17,600 cash in County-held account
- Although in fair condition, the building could be a target for graffiti and vandalism



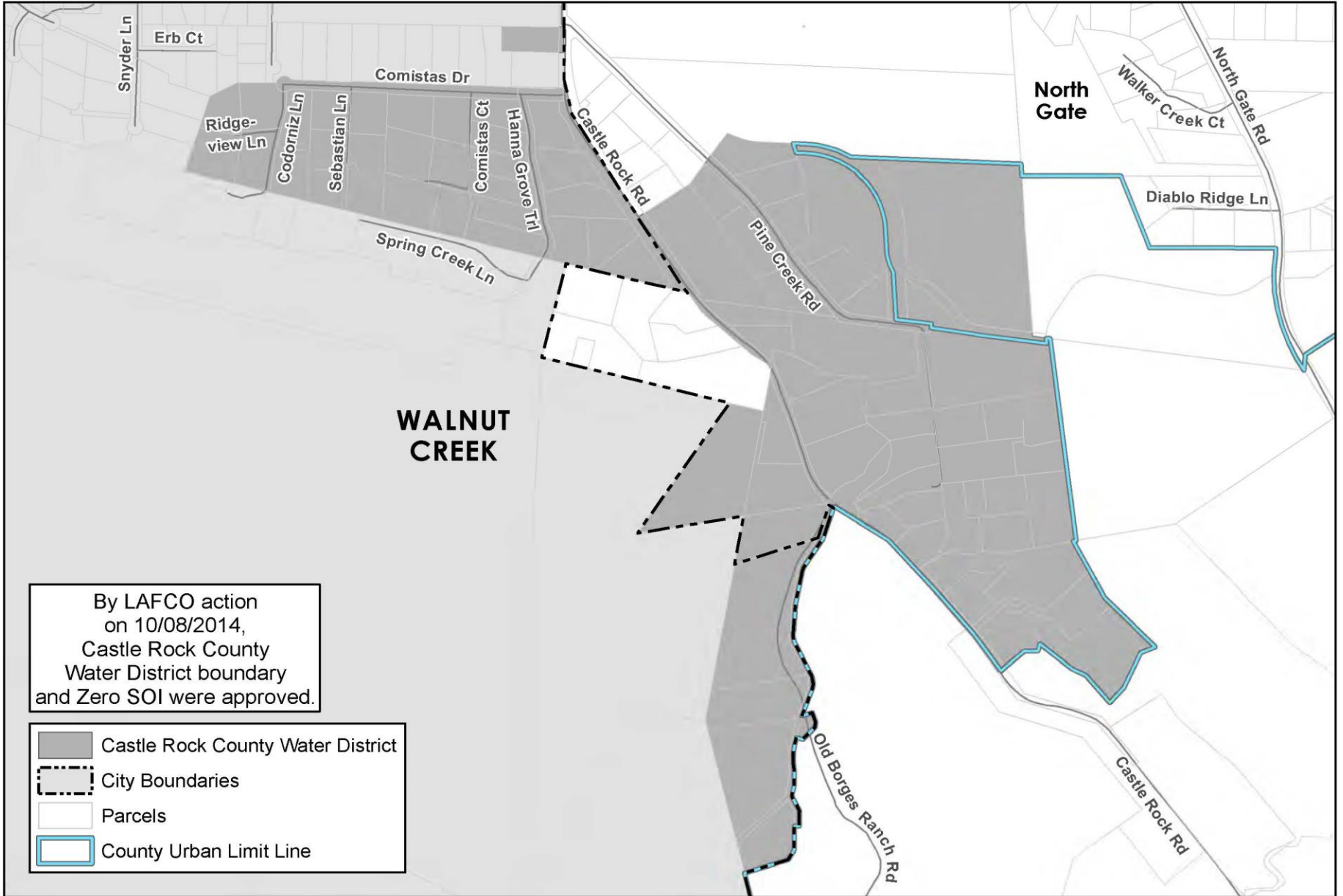
# DISSOLUTION AS AN OUTCOME OF A MUNICIPAL SERVICE REVIEW

- Due to shared boundaries with cities of Richmond and San Pablo and a CSA, options included annexation to these cities, consolidation with the CSA, and dissolution
- RWPRPD, LAFCo or an affected agency could initiate dissolution
- LAFCo voted to dissolve RWPRPD and named the County as successor agency to wind up affairs (no continuation of services likely)
- LAFCO established terms and conditions

# CASTLE ROCK COUNTY WATER DISTRICT (CRCWD)

- In 2014, Contra Costa LAFCo completed a countywide water/wastewater MSR and discovered CRCWD in the course of that study
- Formed in 1955, CRCWD is an independent district with 55 connections serving 137 residents on 79 parcels.
- Provides untreated water for landscaping, commercial and four commercial stables (10 customers treat water for residential use)
- Purchases water from Contra Costa Water District (CCWD) - There was little data available and no established sphere of influence

# Castle Rock County Water District and Zero SOI



By LAFCO action  
on 10/08/2014,  
Castle Rock County  
Water District boundary  
and Zero SOI were approved.

- Castle Rock County Water District
- City Boundaries
- Parcels
- County Urban Limit Line



# LAFCO RECOMMENDATIONS IMPLEMENTED

- In addition to adopting a zero SOI signaling future consolidation or dissolution, LAFCo requested an update from the District regarding:
  - Information regarding water quality
  - Engineering report on system infrastructure
  - Testing/treatment and monitoring
  - Water conservation efforts
  - Board succession plan
  - Cautionary signage regarding untreated water

# DISTRICT ACTIONS

- The District established a website with contact and board meeting information, financial reports, water conservation, 2015 engineering study, service area map and other data
- In 2015, the District completed a *Facilities Condition Assessment and Evaluation Report* identifying weaknesses in system and cost to make improvements
- District provided regular updates to LAFCo
- CRCWD and CCWD have begun a functional consolidation and several customers have connected to the CCWD metered system

# LESSONS LEARNED

The value of MSR's to agencies under study as well as informing the sphere of influence

At the micro level - The importance of the Executive Officer's report distilling the volume of info in each MSR document into the key issues and areas of determination in the EO Report

At the macro level - The MSR program offers a thorough inventory of the multitude of service providers in a given county

Determinations in the form of recommendations that can be implemented for corrective action or improvement

The ability of LAFCo to request continuity reports making the MSR process along with special studies an iterative process

While an MSR may not result in reorganization, implementation of LAFCo recommendations improve efficiencies and transparencies.