

Yolo LAFCO Agricultural Conservation Policy



Yolo County Local Agency Formation Commission

Commissioners

★ *Public Member* Olin Woods, Chairman ★

★ *City Members* Tom McMasters-Stone, Stephen Souza ★

★ *County Members* Helen M. Thomson, Matt Rexroad, Vice-Chairman ★

Alternate Commissioners

Public Member Robert Ramming ★ *City Member* Skip Davies ★ *County Member* Mariko Yamada

Overview

- Yolo LAFCO Agricultural Conservation Policy was established in 1994
- The Policy allows the Commission to clearly communicate its purpose and expectations relative to agriculture

Policy:

- Outlines the relationship of LAFCO laws, policies, factors and standards
- Clarifies expectations
- Establishes and implements a 1:1 agricultural mitigation ratio

Mitigation Land:

- Standards for agricultural easements:
 - Character
 - Location
 - Participants
 - Vehicle

Commission Policy Encourages:

- Orderly growth and ag protection are not mutually exclusive
- Adoption of local policies
- Awareness of LAFCO policy
- Early implementation

Additional Tools:

- LESA

- Land Evaluation and Site Assessment Model
- Measures land evaluation
- Measures site assessment
- Includes a four tiered rating system

Changes/Issues over the years:

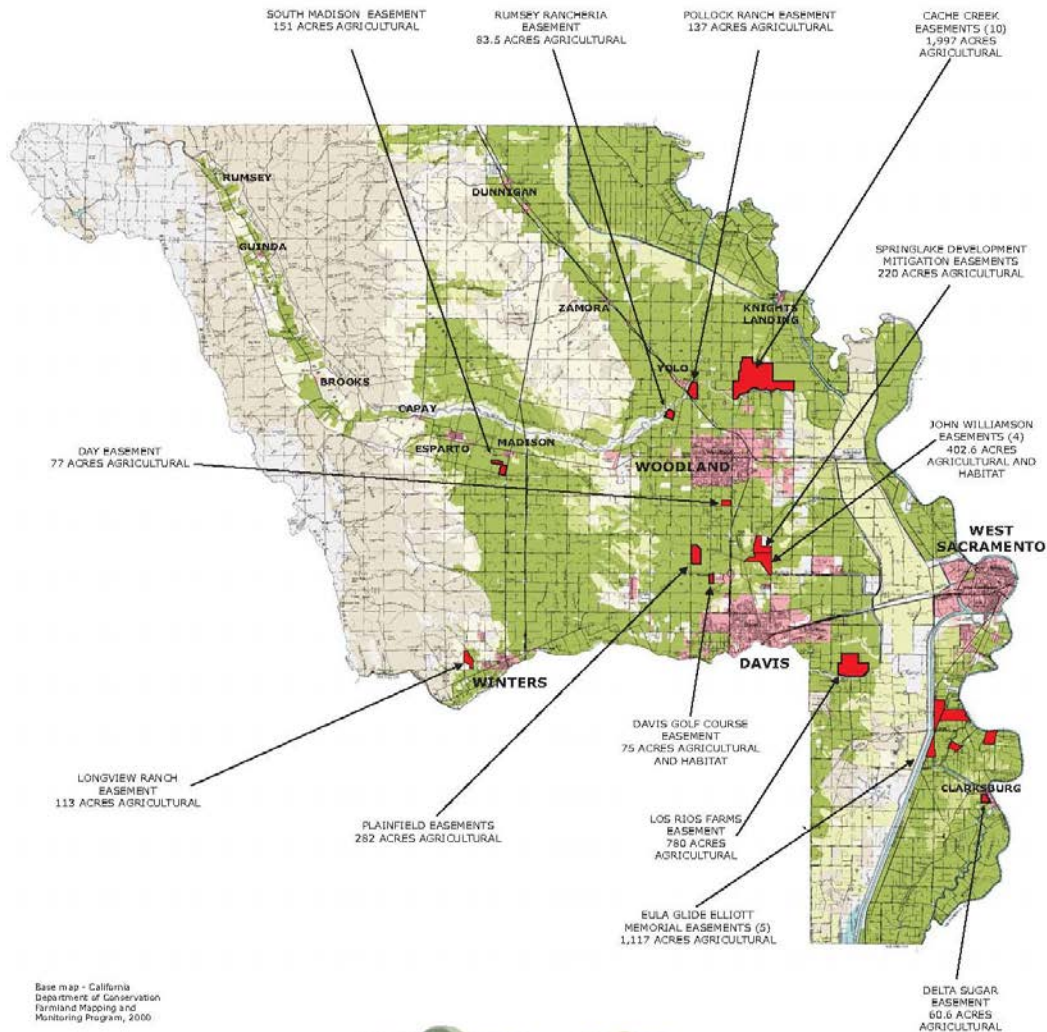
- No annexation of Williamson Act lands
- State law authored to allow exceptions
- Mitigation for schools
- Waiver for school sites
- Out of Agency Agreements
- All undeveloped areas subject to policy

Changes/Issues Over the Years

- Combination of Ag and Habitat Easements
- Easement Holder
- Use of In Lieu fees
- If habitat does not affect agriculture
- Non-profit entity favored - public agency can be coholder
- Payment to agricultural conservation entity

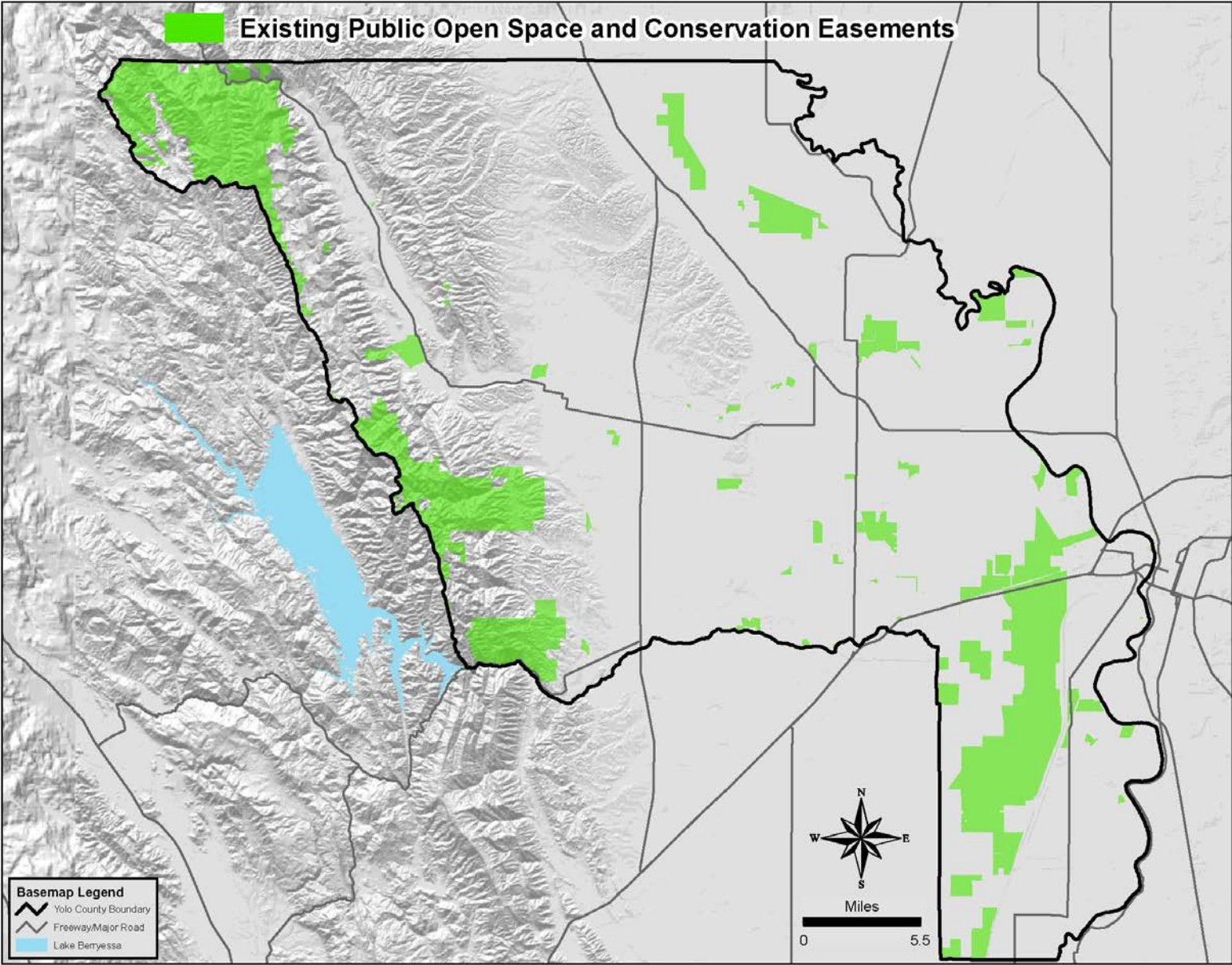
IN LIEU FEE

- purchase of conservation easements
 - Strongly encouraged for less than 20 acres
 - Formula based on average of recent agricultural land purchases
 - Agricultural conservation entity standards



YOLO LAND TRUST EASEMENTS

Existing Public Open Space and Conservation Easements



Questions?

